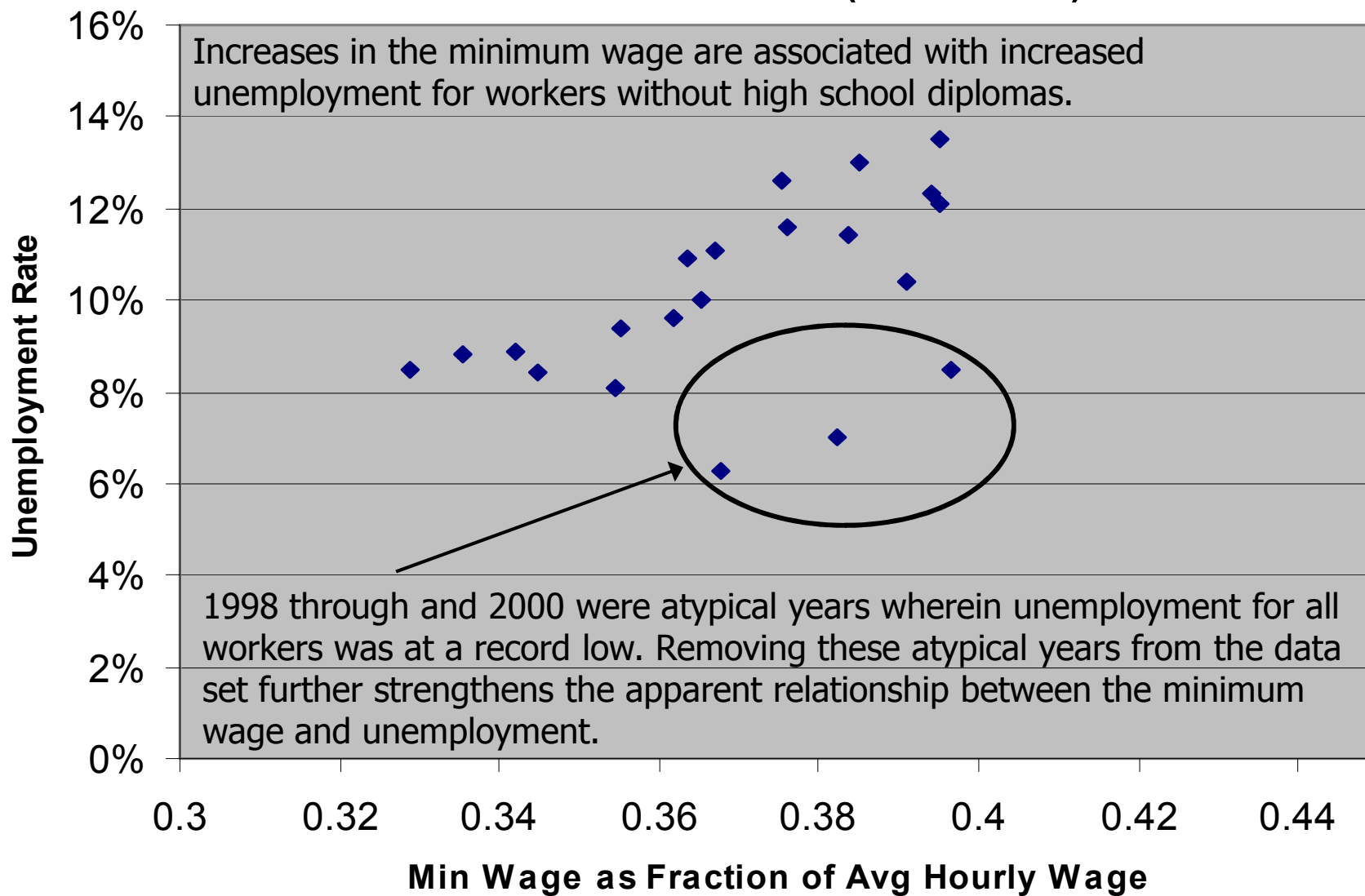
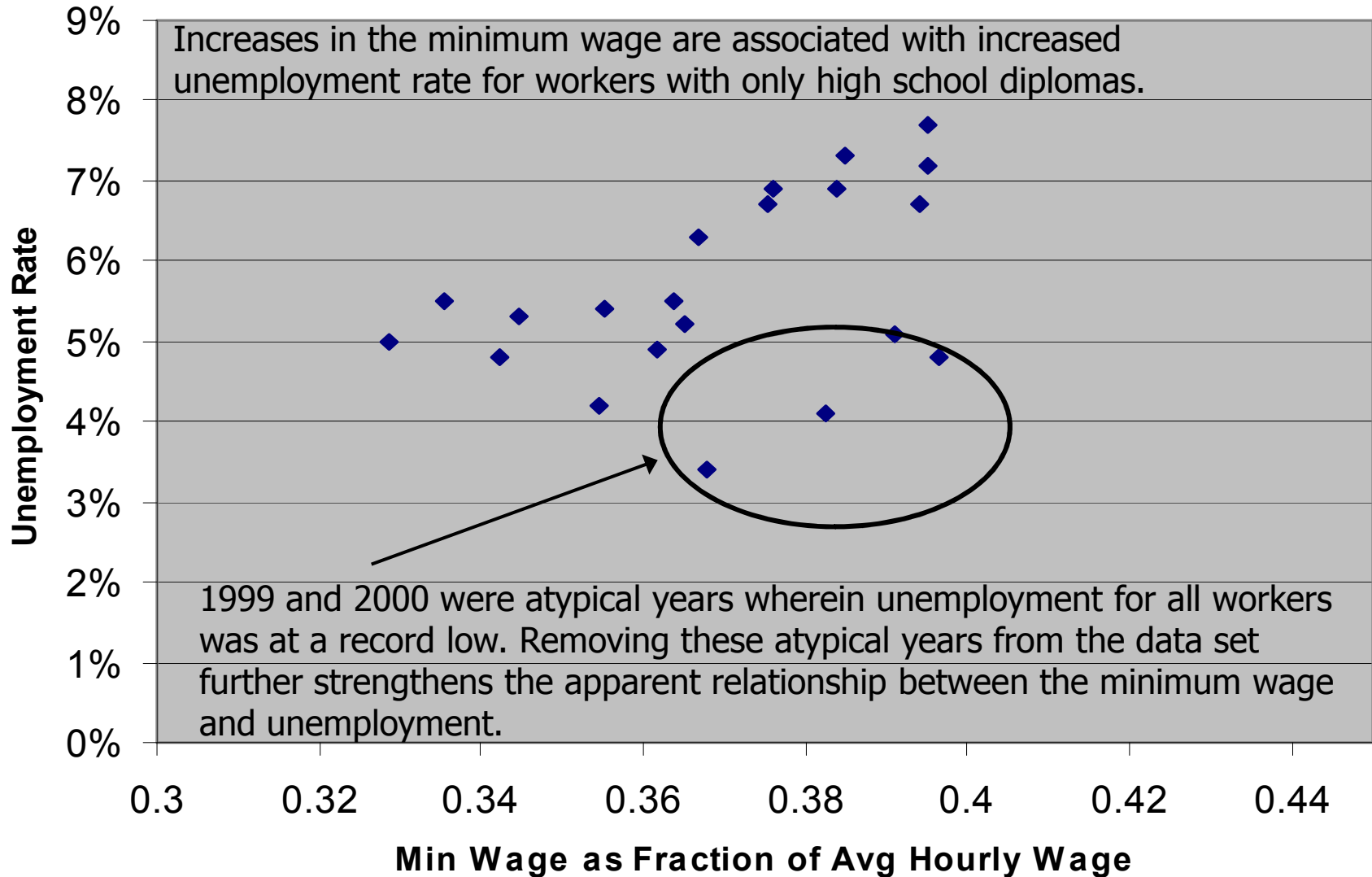


Less than HS Education (1984-2004)



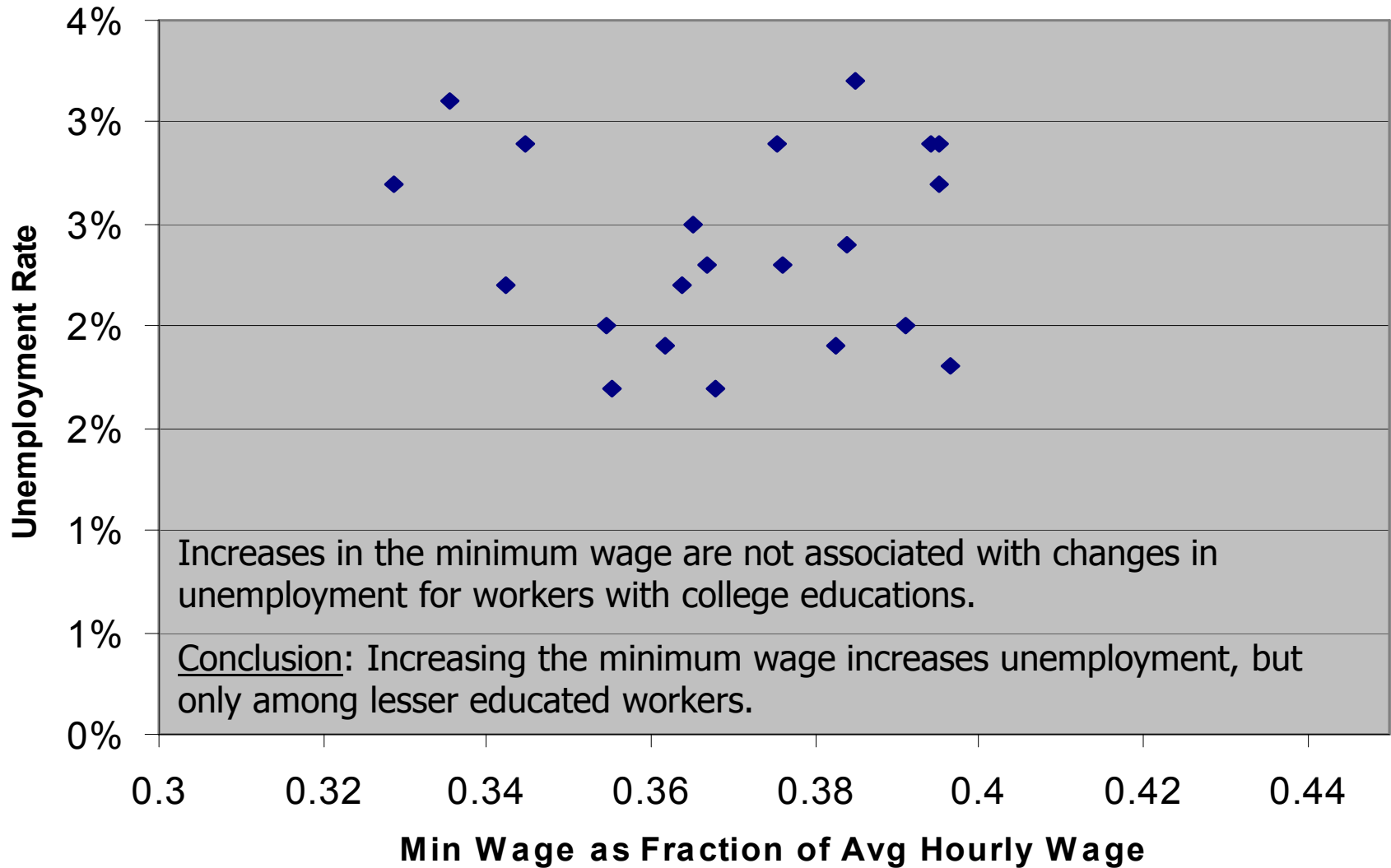
Source: Statistical Abstract of the United States, and Bureau of Labor Statistics

HS Education (1984-2004)



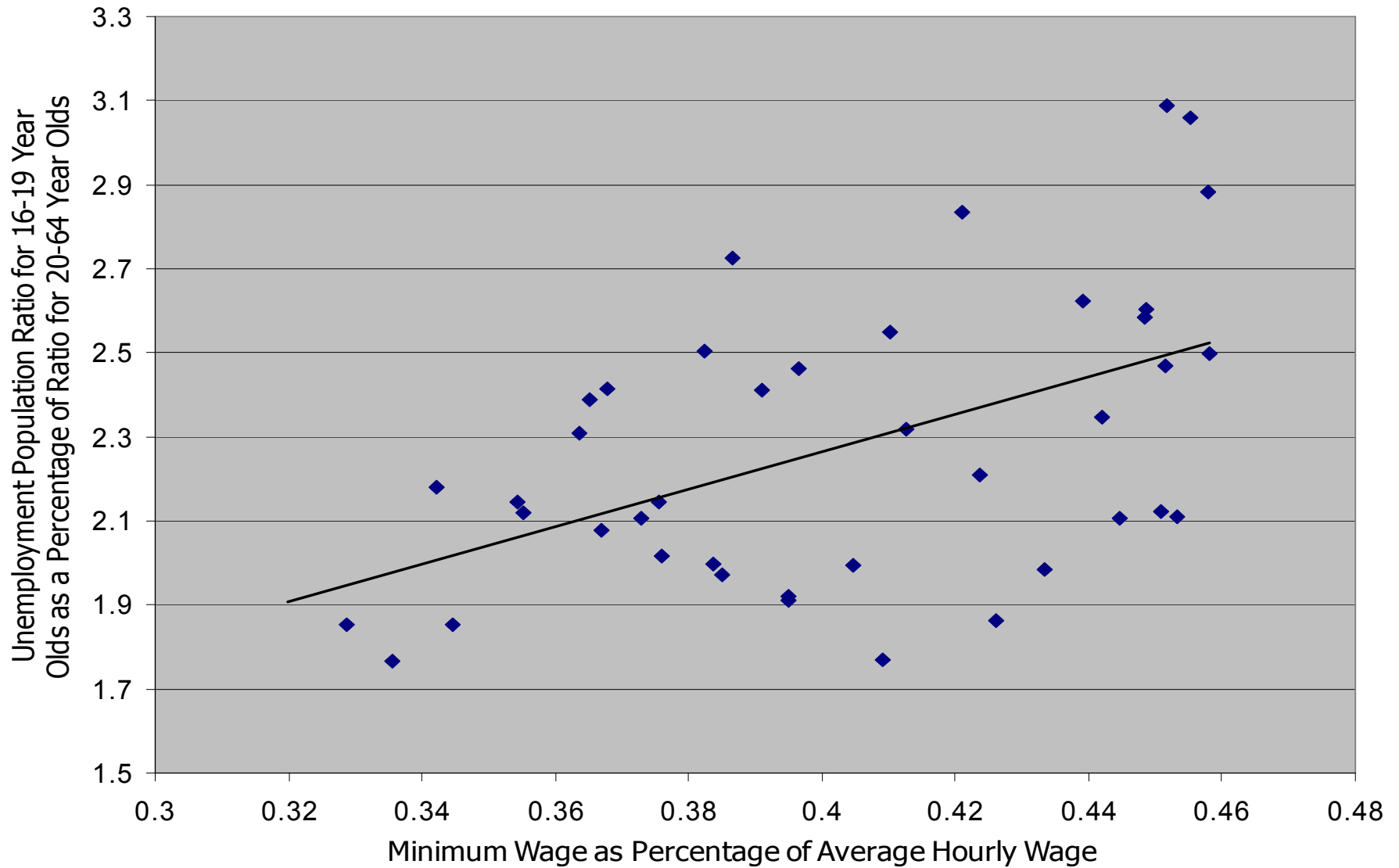
Source: Statistical Abstract of the United States, and Bureau of Labor Statistics

College Education (1984-2004)



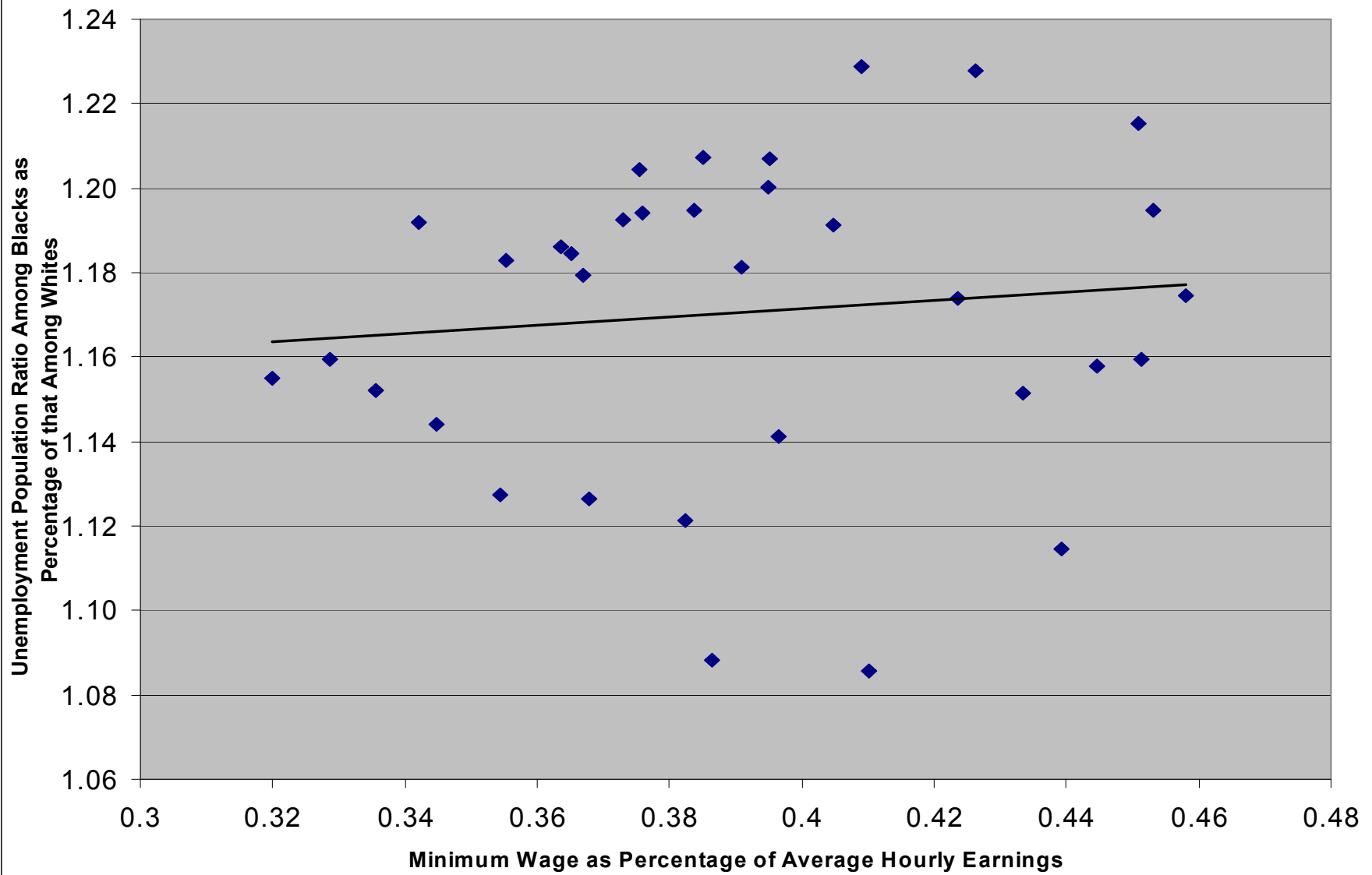
Source: Statistical Abstract of the United States, and Bureau of Labor Statistics

Unemployment for Teenagers Relative to Adults (1964-2004)



Source: Bureau of Labor Statistics

Unemployment for Blacks Relative to Whites (1972-2005)



Source: Bureau of Labor Statistics